

Disability Statistics New Jersey



2024



Prepared by the Center for Independent Living of South Jersey



2024 Statistics - Disabilities in New Jersey

Prevalence - State Level

Prevalence of Disabilities in New Jersey and the CILSJ Service Area

Since 2011, approximately 1 in 4 adults in New Jersey have consistently reported living with a disability. This trend emphasizes the ongoing need for comprehensive support services. The percentage of individuals experiencing independent living disabilities has remained stable, indicating a sustained demand for independent living support across the state. This reinforces the critical role that independent living services play in the well-being of this population.

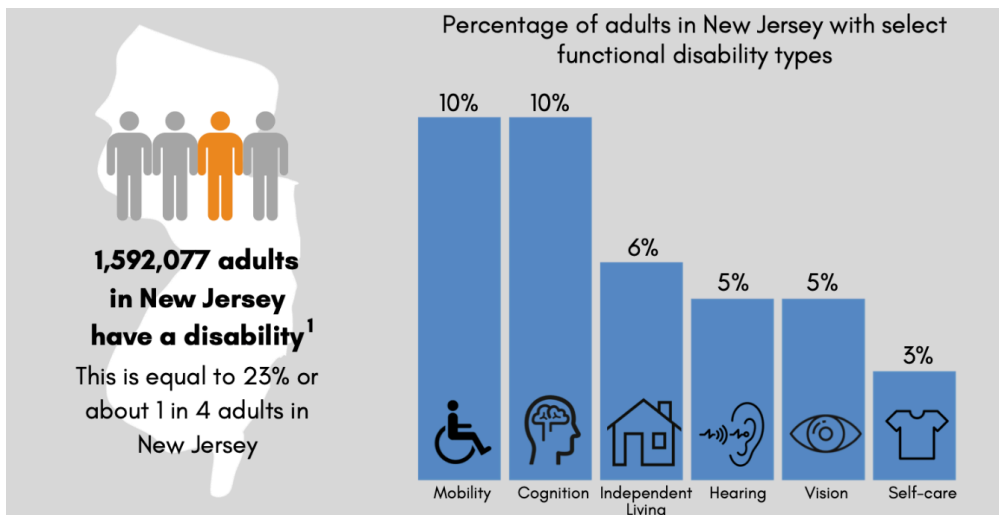
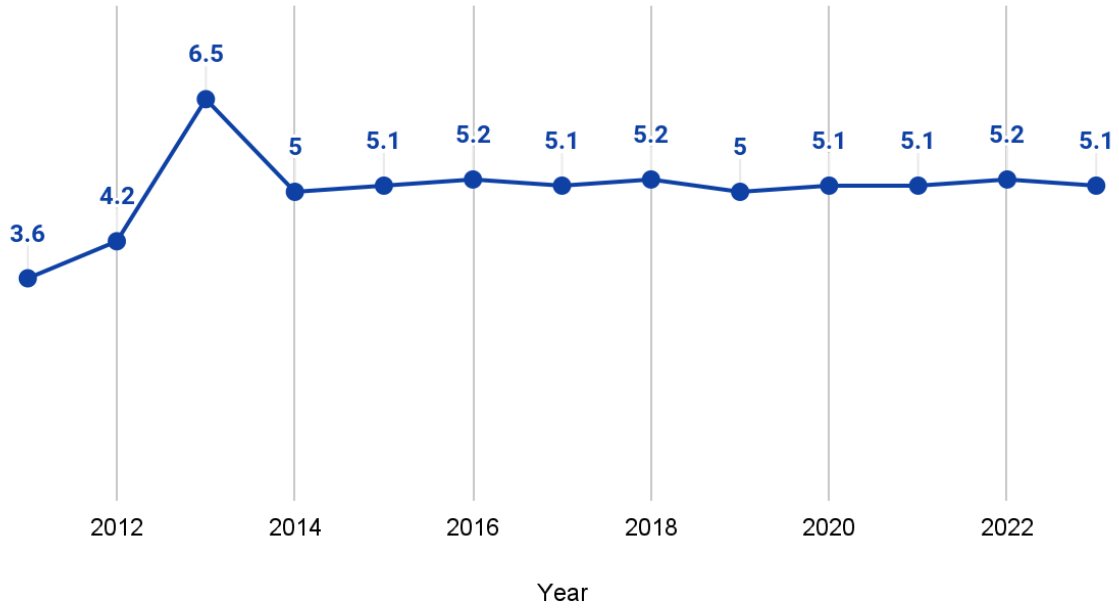


Figure 1 - Disability Prevalence in the State of New Jersey by Disability Type

Source: 2022 Behavioral Risk Factor Surveillance System (BRFSS) via the Centers for Disease Control & Prevention (CDC)



Percent with an Independent Living Difficulty in NJ (2011 - 2023)



County-Level Data

County-Level Data on Disabilities

In Camden and Gloucester counties, which are part of the service area for the Center for Independent Living of South Jersey (CILSJ), the prevalence of disabilities remains notably higher than the state average.

CILSJ Region - Percent with an Independent Living Difficulty (2023)

Region	Percent with a Disability (all disabilities)	Number of People w/Disabilities	Percent with an Independent Living Difficulty	Number of People with an Independent Living Difficulty
Gloucester County	15%	44,672	6%	14,929
Camden County	14%	74,812	7%	27,207
Camden City	23%	16,315	11%	5,888



Region	Percent with a Disability (all disabilities)	Number of People w/Disabilities	Percent with an Independent Living Difficulty	Number of People with an Independent Living Difficulty
CILSJ Service Population	14%	103,169	35%	36,248

Data Source: 2023 American Community Survey ACS -1 Year File - Table S1810 16,315 - Camden City

CILSJ Service Area Overview

For the overall CILSJ service area, which includes Gloucester and Camden counties (excluding Camden City), the data indicate:

- Total population: 760,310
- Percentage with any disability: 14%
- Estimated count of individuals with any disability: 103,169
- Percentage with an independent living difficulty: 35%
- Estimated count of individuals with an independent living difficulty: 36,248

Recommendations

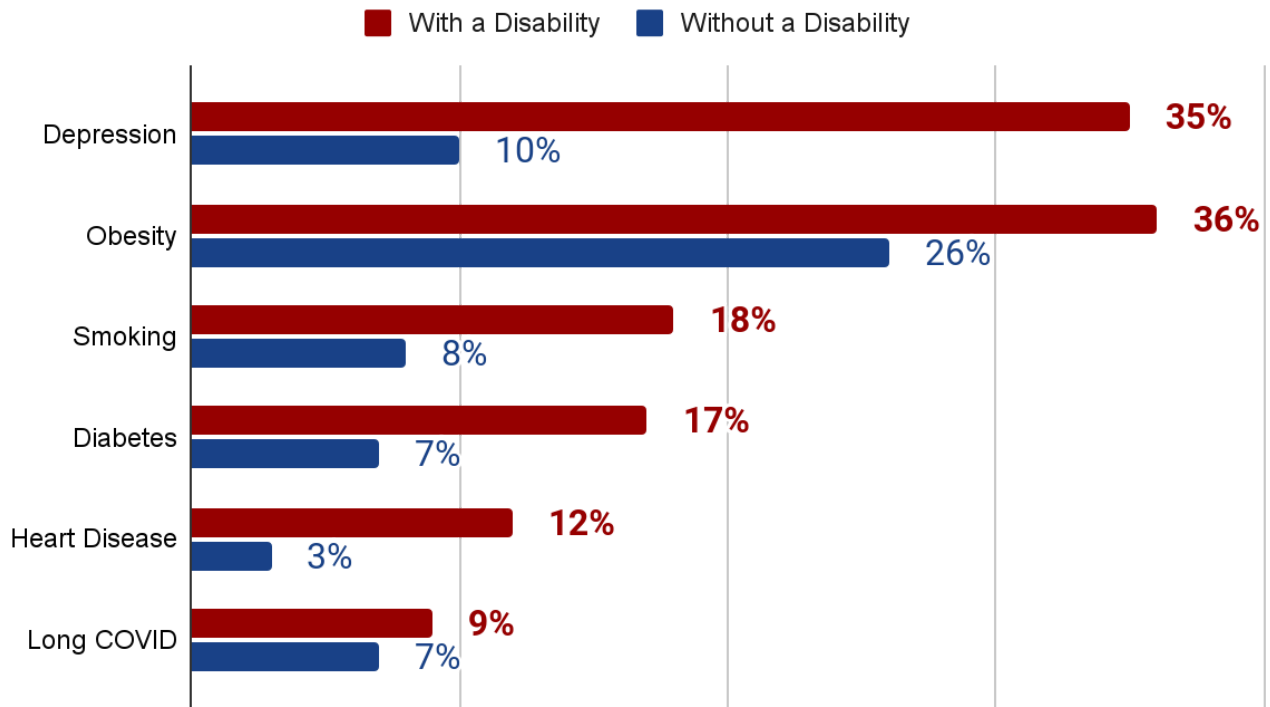
Investments and support for independent living services and organizations are essential to addressing the needs of individuals with disabilities in Camden and Gloucester counties. Additionally, targeted funding for outreach initiatives is crucial for raising awareness about available programs and services that can significantly improve the quality of life for people with disabilities.

These strategic efforts will help ensure that the population served by CILSJ receives the necessary resources to navigate independent living challenges, fostering greater independence and community engagement.



Health Disparities

Adults with disabilities in New Jersey experience health disparities and are more likely to report...



Data Source: [2022 Behavioral Risk Factor Surveillance System \(BRFSS\) via CDC](#)

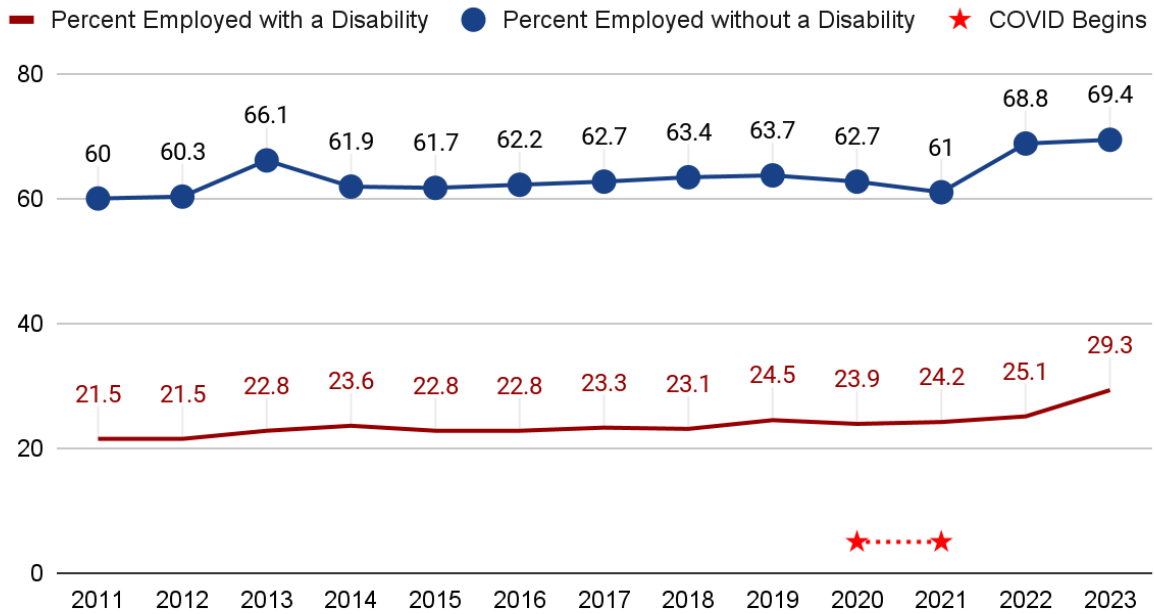


Employment

Employment for individuals with disabilities remains a challenge:

- **2023** data shows only **29.3%** of people with disabilities are employed in New Jersey, compared to **64.4%** of those without disabilities.
- In **Gloucester County**, employment rates for people with disabilities ranged from **23.9% to 25.8%**, while **Camden County** saw an increase to **30.5%**.
- **Recommendations:** Investment in job training and inclusive employment initiatives is crucial to bridging the employment gap for individuals with disabilities.

New Jersey Employment Status (2011 - 2023)





CILSJ Region - Percent Employed w/ a Disability (2021-2023)

Region	Percent Employed with a Disability
Gloucester County	23.9% - 25.8% (2022) 71% not employed
Camden County	23.4%, 25.4% (2022) - 30.5% (2023) - in 2023 66.9% of disabled people not employed
New Jersey State	24.2%, 25.1% (2022) - 29.3% (2023) 67.8% not employed.

Source: American Community Survey ACS -1 Year Files; 5- Year File S1810 (no 2023 file for GC, 2022 5YR most recent)

New Jersey - Employment Status (2011 - 2023)

Year	Percent Employed with a Disability	Percent Employed without a Disability
2023	29.3%	64.4%
2022	25.1%	68.8%
2021	24.2%	61%
2020	23.9%	62.7%
2019	24.5%	63.7%
2018	23.1%	63.4%
2017	23.3%	62.7%
2016	22.8%	62.2%
2015	22.8%	61.7%
2014	23.6%	61.9%
2013	22.8%	66.1%



Year	Percent Employed with a Disability	Percent Employed without a Disability
2012	21.5%	60.3%
2011	21.5%	60%

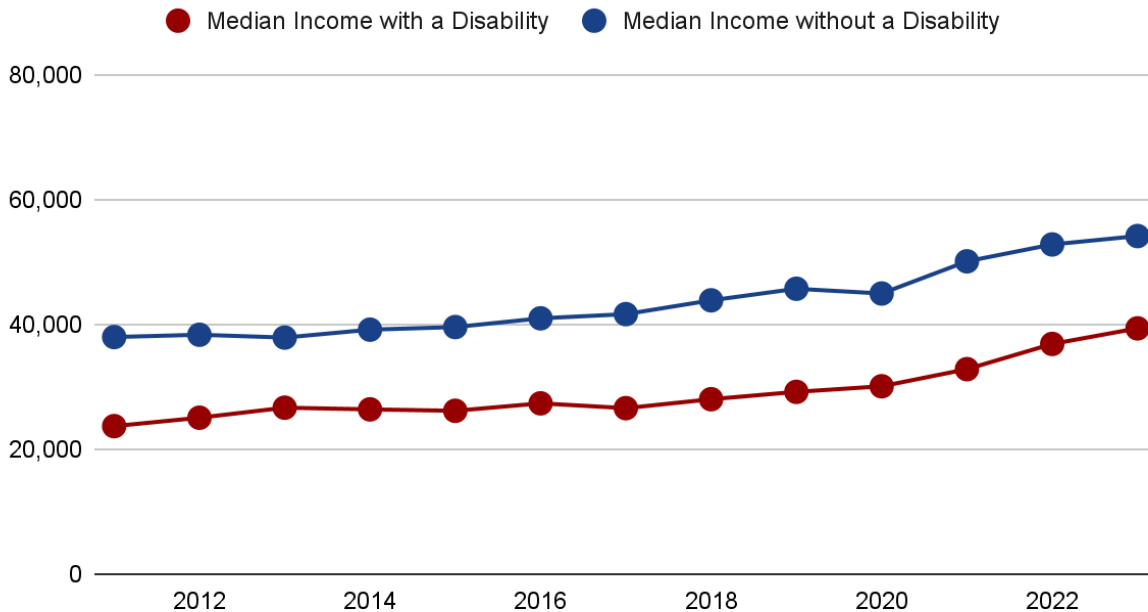
Source: American Community Survey ACS -1 Year Files - Table S1811

Income & Earnings

Although income levels have risen since 2011, disparities persist:

- **2023** median income for people with disabilities in New Jersey was **\$39,363**, compared to **\$54,144** for those without disabilities.
- Median incomes in **Gloucester** and **Camden counties** were **\$34,673** and **\$36,430**, respectively, both below the state average for people with disabilities.
- **Recommendations:** Programs focused on job placement and economic supports are essential to reduce the income gap
-

Median Income in New Jersey (2011 - 2023)





New Jersey - Median Income (2011- 2023)

Year	Median Income with a Disability	Median Income without a Disability
2023	\$39,363	\$54,144
2022	\$36,867	\$52,799
2021	\$32,825	\$50,097
2020	\$30,086	\$44,944
2019	\$29,192	\$45,702
2018	\$28,014	\$43,852
2017	\$26,581	\$41,639
2016	\$27,352	\$40,968
2015	\$26,158	\$39,569
2014	\$26,387	\$39,153
2013	\$26,656	\$37,886
2012	\$25,048	\$38,340
2011	\$23,702	\$37,969

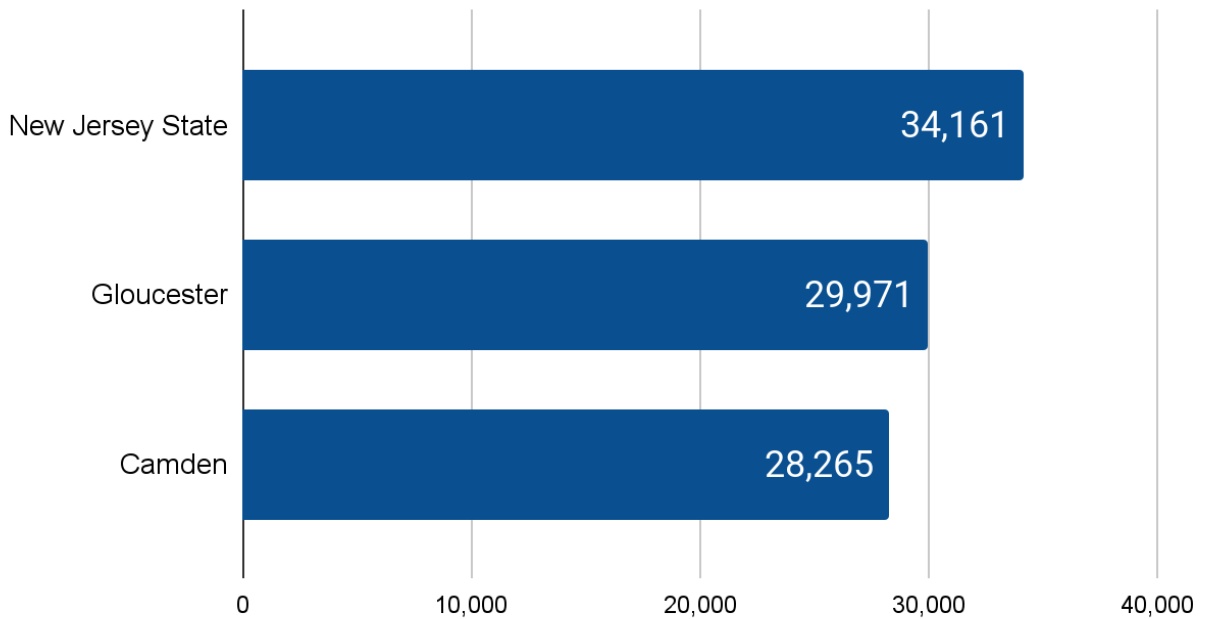
2023	Median Income with a Disability	Median Income without a Disability
NJ Male	\$46,319	\$62,239
GC Male	\$51,872	\$60,508
CC Male	\$39,078	\$55,323
NJ Female	\$33,574	\$46,853
GC Female	\$29,235	\$45,953
CC Female	\$31,903	\$42,223
NJ Gender Difference	\$12,745	\$15,386



Center for Independent Living of South Jersey

GC Gender Difference	\$22,637	\$14,555
CC Gender Difference	\$7,175	\$13,100
NJ Total	\$39,363	\$54,144
GC Total	\$34,673	\$52,047
CC Total	\$36,430	\$49,492

Median Earnings for People with Disabilities (2022)



Region	Median Income for People with Disabilities (2022)	Difference from State Average (2021 in 2021 Dollars)	Difference from State Average (2022)
Gloucester County	\$29,971	\$5,072	\$4,190
Camden County	\$28,265	\$5,466	\$5,896
New Jersey State	\$34,161	N/A	

Source: American Community Survey 2022 ACS -5 Year File

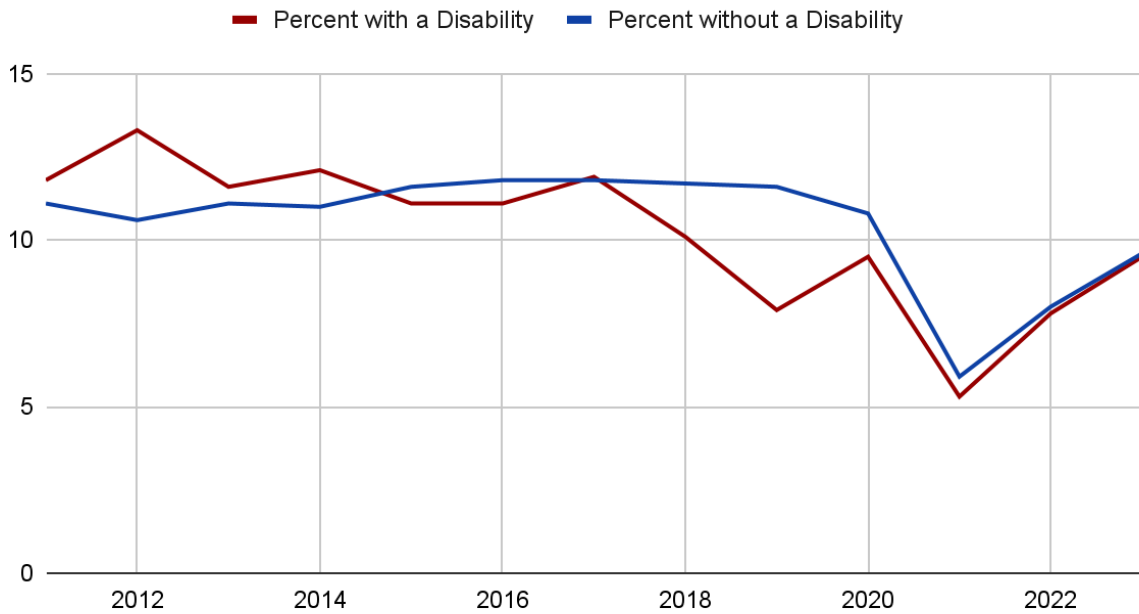


Public Transportation

Public transit usage among individuals with disabilities has fluctuated:

- In **2023**, **9.5%** of people with disabilities in New Jersey used public transit, down from previous years.
- **Camden County** had a usage rate of **5.6%**, while **Gloucester County** was **2.5%**.
- **Recommendations:** Addressing accessibility and affordability could increase public transit use and support economic participation for individuals with disabilities.

Commuted to Work by Public Transportation (2011 - 2023)





Center for Independent Living of South Jersey

Year	Percent with a Disability	Percent without a Disability
2023	9.5%	9.6%
2022	7.8%	8.0%
2021	5.3%	5.9%
2020	9.5%	10.8%
2019	7.9%	11.6%
2018	10.1%	11.7%
2017	11.9%	11.8%
2016	11.1%	11.8%
2015	11.1%	11.6%
2014	12.1%	11.0%
2013	11.6%	11.1%
2012	13.3% (historic high)	10.6%
2011	11.8%	11.1%

Source: American Community Survey ACS -1 Year Files - Table S1811; 2020 uses 5-Year

CILSJ Region - Percent Commuting to Work via Public Transit (2021-2022)

Region	Percent with a Disability - Public Transport (2021)	Percent with a Disability - Public Transport (2022)
Gloucester	2.3%	2.5%
Camden	5.7%	5.6%
New Jersey State	8.2%	7.6%

Source: American Community Survey 2021 and 2022 ACS -5 Year Files

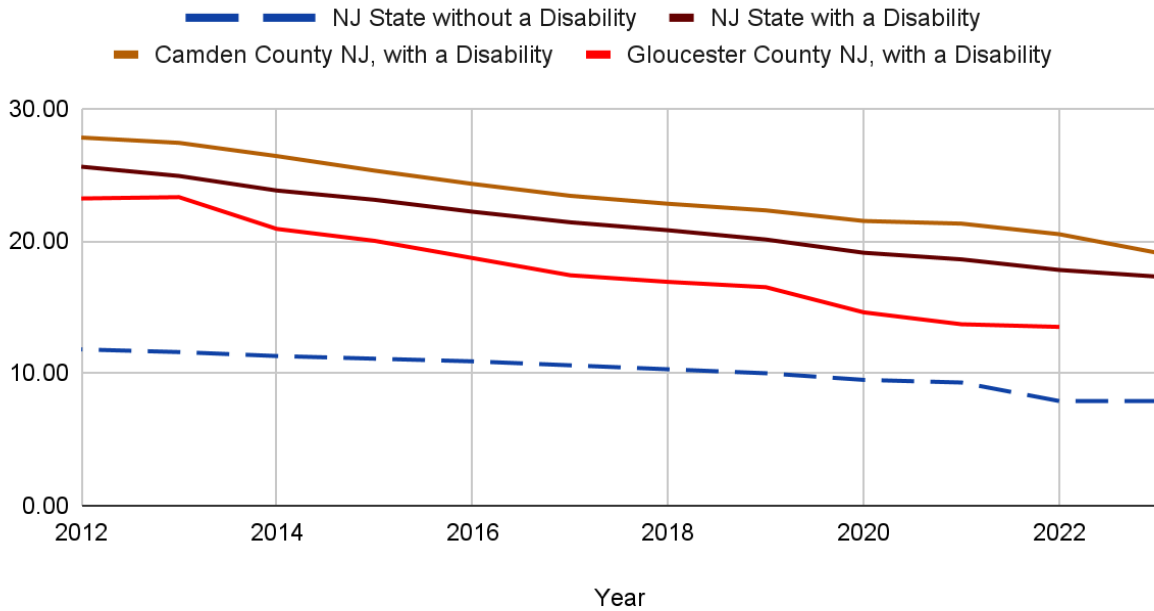


Education

Higher education attainment has improved slightly but still shows a significant gap:

- In **2023**, **25.1%** of people with disabilities in New Jersey had a bachelor’s degree or higher, compared to **47.1%** of those without disabilities.
- **Recommendations:** Enhanced education and training programs for people with disabilities, coupled with industry partnerships, are needed to boost educational outcomes.

Educational Attainment Less Than High School



Year	NJ State without a Disability	NJ State with a Disability	Camden County NJ, with a Disability	Gloucester County NJ, with a Disability
2023	7.9%	17.3%	19.1%	*N/A
2022	7.9%	17.8%	20.5%	13.5%



Year	NJ State without a Disability	NJ State with a Disability	Camden County NJ, with a Disability	Gloucester County NJ, with a Disability
2021	9.3%	18.6%	21.3%	13.7%
2020	9.5%	19.1%	21.5%	14.6%
2019	10%	20.1%	22.3%	16.5%
2018	10.3%	20.8%	22.8%	16.9%
2017	10.6%	21.4%	23.4%	17.4%
2016	10.9%	22.2%	24.3%	18.7%
2015	11.1%	23.1%	25.3%	20%
2014	11.3%	23.8%	26.4%	20.9%
2013	11.6%	24.9%	27.4%	23.3%
2012	11.8%	25.6%	27.8%	23.2%

Source: American Community Survey ACS -5 Year Files - Table S1811; Data not available for Gloucester County 2023.

NJ Educational Attainment - Higher Education (BA or Higher)

Year	NJ State without a Disability	NJ State with a Disability	Camden County NJ, with a Disability	Gloucester County NJ, with a Disability
2023	47.1%	25.1%	19.3%	*N/A
2022	45.6%	23.4%	17%	16.9%
2021	41.9%	22.4%	16.7%	15.8%
2020	41.2%	21.9%	15.2%	14.9%
2019	40.1%	21%	15.8%	14.9%

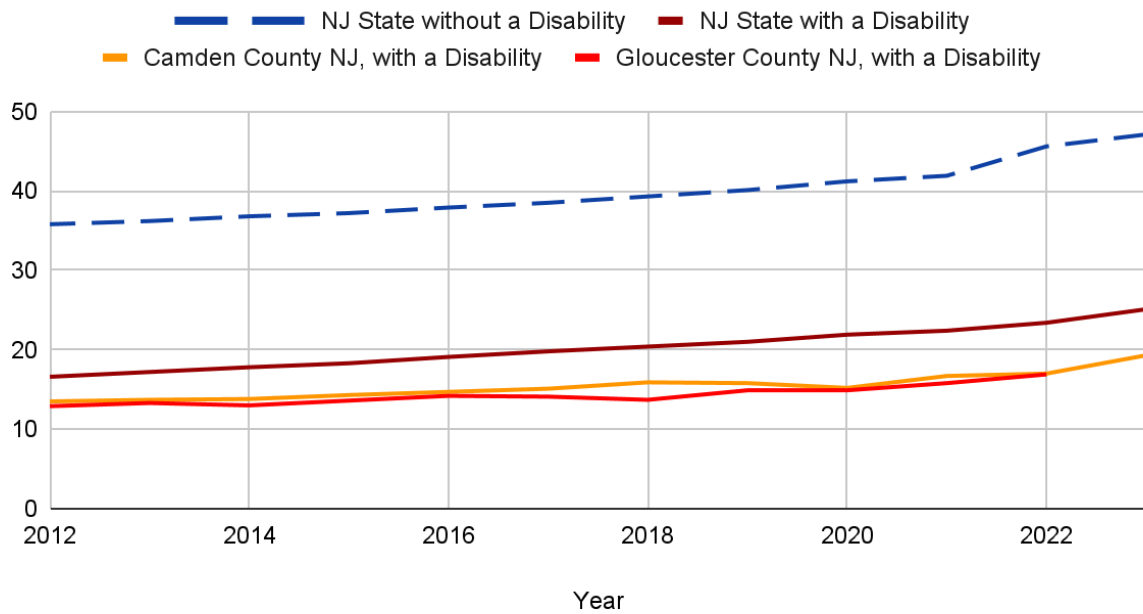


Center for Independent Living of South Jersey

Year	NJ State without a Disability	NJ State with a Disability	Camden County NJ, with a Disability	Gloucester County NJ, with a Disability
2018	39.3%	20.4%	15.9%	13.7%
2017	38.5%	19.8%	15.1%	14.1%
2016	37.9%	19.1%	14.7%	14.2%
2015	37.2%	18.3%	14.3%	13.6%
2014	36.8%	17.8%	13.8%	13%
2013	36.2%	17.2%	13.7%	13.3%
2012	35.8%	16.6%	13.5%	12.9%

Source: American Community Survey ACS -5 Year Files - Table S1811

Educational Attainment - Higher Education (BA or Higher)





Poverty Status

The percentage of individuals with disabilities living below the poverty line remains concerning:

- In **2023**, **17.2%** of people with disabilities in New Jersey were below the poverty level, compared to **7.8%** of those without disabilities.
- **Camden County's** rate was **19.7%**, higher than the state average.
- **Recommendations:** Increased social support services and poverty alleviation programs can help address these economic disparities.

NJ Poverty Status - Below 100% of the Poverty Level

Year	Percent with a Disability	Percent without a Disability
2023	17.2%	7.8%
2022	16.7%	7.7%
2021	17.1%	9.2%
2020	16.5%	8.7%
2019	16.8%	8.3%
2018	16.7%	8.5%
2017	16.3%	9%
2016	17.1%	9.4%
2015	16%	9.5%
2014	16.9%	9.8%
2013	16.7%	10%
2012	17.1%	9.5%



Center for Independent Living of South Jersey

Year	Percent with a Disability	Percent without a Disability
2011	16.5%	9.2%

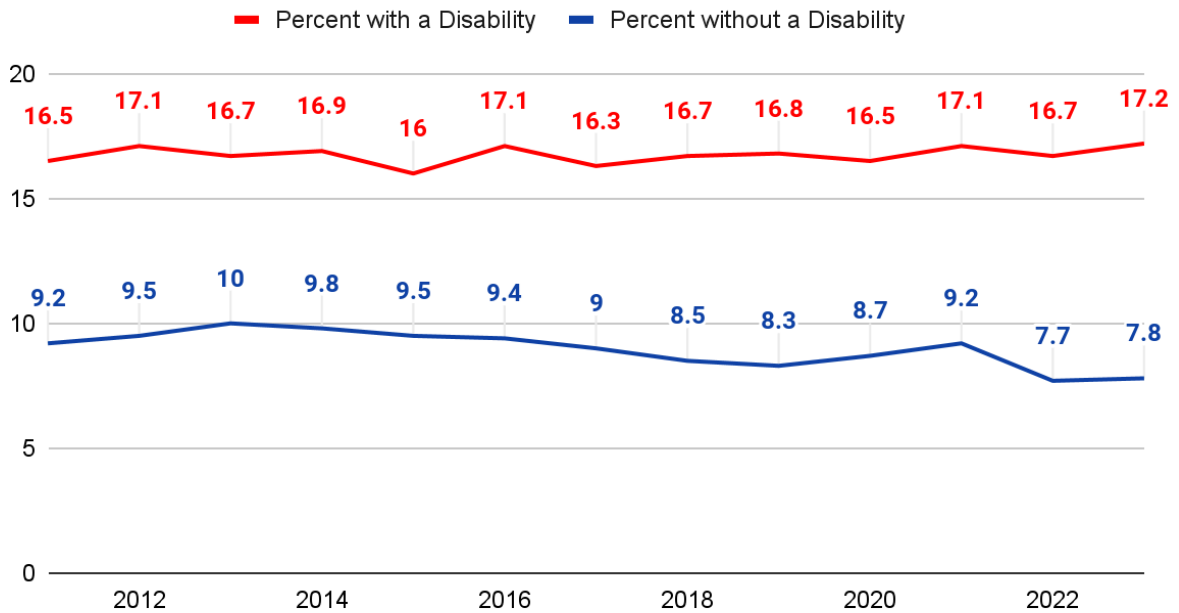
Source: American Community Survey ACS -1 Year Files - Table S1811

CILSJ Region - Percent Below 100% of the Poverty Level (2021-2022)

NJ County	Percent with a Disability (2021)	Percent with a Disability (2022)
Gloucester	13.5%	14.7%
Camden	19.7%	19.6%
New Jersey State	17.1%	16.7%

Source: American Community Survey ACS -5 Year Files - Table S1811

Poverty Status in New Jersey (2011 to 2023)





References & Notes

With the exception of 2020, when only the 5-year file is accessible, all data sources employ ACS 1-Year files. However, for particular economic statistics pertaining to Gloucester County, solely the 5-Year file was accessible. Each table and graph specifies the sources used.

<https://www.researchondisability.org/annual-disability-statistics-collection>

<https://www.doh.nj.gov/doh-shad/community/indicators/ChronicDisease/DisabilityStatus>

2023 Disability Compendium: Institute on Disability/UCED. University of New Hampshire. 2023. Accessed April 6, 2023. <https://disabilitycompendium.org/annualreport>

United States Census: <https://data.census.gov/table?q=disability&q=040XX00US34&tid=ACSS1Y2021.S1811>

Additional CDC disability & health data can be found here:

<https://www.cdc.gov/ncbddd/disabilityandhealth/infographic-disability-impacts-all.html>

World Health Organization. World Report on Disability (2011)

<https://www.who.int/publications/i/item/9789241564182>

Notes on disability datasets: <https://www.cdc.gov/ncbddd/disabilityandhealth/datasets.html>

Contact Information:

Theresa Rohlfing, *Executive Director*, CIL-SJ

Email: rohlfingcilsj@outlook.com

Gary Rettberg, *Grants & Communications*, CIL-SJ

Email: Gary.Rettberg@hotmail.com

The Center for Independent Living of South Jersey
Address: 141 S Black Horse Pike, Blackwood, NJ 08012
Phone: (856) 853-6490
Website: <https://www.cil-sj.com>